

FANTASIE QUARTETTE "NATIONAL HERITAGE" DRAKE RIMMER.

Allegro moderato ( $\text{♩} = 112$ ) *f*

A LET ERIN REMEMBER *ff*

B *mf*

Allegro con brio ( $\text{♩} = 132$ ) KEEL ROW *mf*

C *1st*

*crese poco a poco*

Andante ( $\text{♩} = 96$ ) DRINK TO ME *p*

*2nd*

Allegro ( $\text{♩} = 120$ ) MELVILLE CASTLE *p* *mf*

E *f*

F *mf*

G *f*

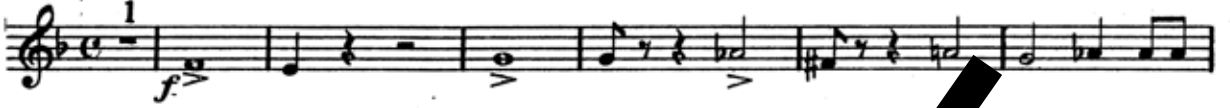
Marcato *ff*

2nd CORNET

No. 47 Set

FANTASIE QUARTETTE "NATIONAL HERITAGE" DRAKE RIMMER.

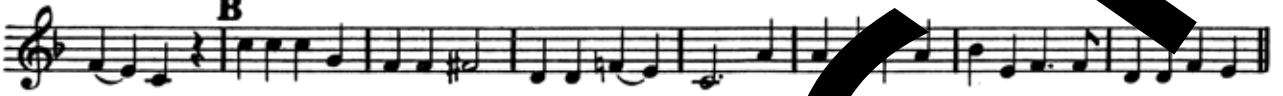
Allegro moderato (♩=112)



A LET ERIN REMEMBER



B



Allegro con spirito (♩=132) KEEL ROW



C



1st

2nd

Andante (♩=96) WINK TUNE ONLY



D



Allegro (♩=120) MELVILLE CASTLE



E



Marcato



SOLO TENOR

No. 47 Set

FANTASIE QUARTETTE "NATIONAL HERITAGE" DRAKE RIMMER.

**Allegro moderato** ( $\text{♩} = 112$ )

*f*

**A** LET ERIN REMEMBER

*ff*

**B**

**Allegro con spirito** ( $\text{♩} = 132$ ) KEEL ROW

*mf*

**C**

*p*

*Andante* ( $\text{♩} = 72$ ) DRINK

*p*

*mf*

**Allegro** ( $\text{♩} = 120$ ) MELVILLE CASTLE

*p*

*mf*

**E**

*f*

**F** Solo

*f*

**G**

*f*

**Marcato**

*ff*

EUPHONIUM

No. 47 Set

FANTASIE QUARTETTE "NATIONAL HERITAGE" DRAKE RIMMER.

*Allegro moderato* ( $\text{♩} = 112$ )  
*f*

**A** LET ERIN REMEMBER  
*ff*

**B**

*Allegro con spirito* ( $\text{♩} = 132$ ) KEEL ROCK  
*mf*

**C** DRINK TO ME ONLY  
*Andante* ( $\text{♩} = 96$ )  
*cresc. poco a poco* *p*

**D**  
*mf*

*Allegro* ( $\text{♩} = 120$ ) MELVILLE CASTLE  
*p* *mf*

**E** Solo  
*f*

**F**  
*mf*

**G** Solo  
*f*

*Marcato*  
*ff*